

Extendable Aluminum Pole

MODEL **CP-45**

Length [Max : 4.5 m / Min : 1.36 m]

Instructions

Please follow this instructions for safety use.

Features

- It is extendable with 3 screw connectors. (1.36m~4.5m)
- There is the M/N connector mount on top of the pole.
- Anodized aluminum pole.



Warning

- Please do not load more than instructed weight and try not to use CP-45 when wind is heavy.
- Use included rope for secure.
- Tighten the screw connectors after adjusting the length.
- Please use the pole vertically or it might cause a damage.
- CP-45 is designed for easy carrying temporary use.
- Use grease for screw connectors each time for caring.

Installation

A. How to adjust the length

- A-1. Anticlockwise the screw connector to loosen.
- A-2. Adjust the pole to your desired length and clockwise the screw connector to tighten.

B. How to set up an antenna

- B-1. Mobile antenna (Non Radial type)
 - Use M/N connector mount located to on top of the pole.
- B-2. GP / Yagi-Uda antenna
 - Detach M/N connector from the pole.

C. How to use the rope

- Use the Guy wire ring located to the top pole and ropes are equally positioned.

[Appearance Diagram]



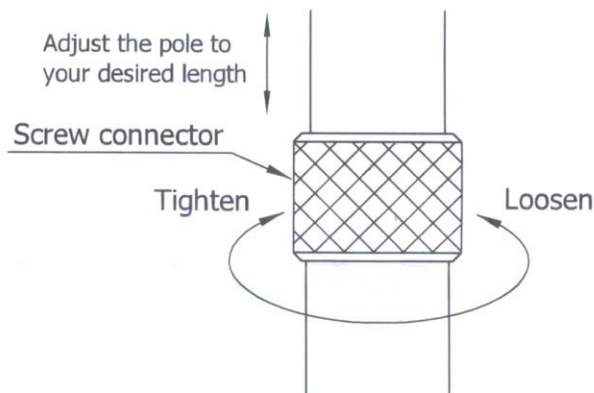
Specifications

Min. Length :	1.36 (m)
Max. Length :	4.5 (m)
Diameter :	
Top	φ22(mm)
Bottom	φ34(mm)
Weight :	1.38(kg)
Max Load (No wind) :	10(kg)

Parts List

1. CP-45 Pole
2. Guy wire ring for stay-rope (already installed)
3. M/N connector mount
4. Rope : 15 (m)

[Adjusting method]



Specifications or appearance is subject to change without notice.

COMET CO.,LTD.

4-18-2, Tsuji, Minami-ku, Saitama-shi, Saitama-Pref, 336-0026, JAPAN

TEL : 81-48-839-3131 / FAX : 81-48-839-3136

URL : <http://www.comet-ant.co.jp/english>



Warning — Outdoor Installations



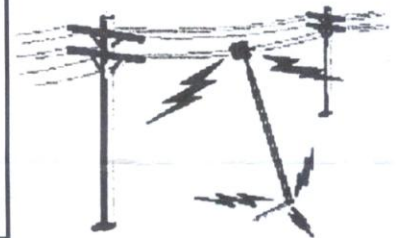
Important safety information:

The following instructions and any safety instructions that came with the equipment you are installing must be followed.

- Make sure all the tools and equipment you are using are in good condition. Use non-conductive ladders and all recommended safety equipment. Place equipment on level ground.
- Know the phone # to the local power company before installation begins.
- Look over the installation area and be sure there are no power lines overhead or anywhere contact can be made with them. Assume that all overhead lines are power lines.
- Always work together with an assistant. In case of emergency, this partner could save your life.
- Let falling towers or antennas fall, do not attempt to catch them.
- If anything comes in contact with a power line, leave it there and call the power company for assistance
- Foul weather days are not antenna or tower installation days.

Contacting power lines can be deadly:

Be sure no power lines are anywhere possible contact can be made. Antennas, towers and all supporting wires etc must be kept away. To make sure there is no possibility of contact with the tower, mast or antenna, the horizontal distance to the electrical line should be twice the total length of the mast/antenna. This safety measure will ensure that the mast will not contact electrical power during installation or later.



If a person comes in contact with electrical power and cannot move:

- Do not touch that person or you could be electrocuted
- Use a non-conductive dry board, stick or rope to push or pull the person away from contact with the electrical power.
- Once they are not contacting electrical power or you feel you cannot safely move them CALL 911, or summon professional assistance immediately.
- If certified, begin CPR until help arrives.

Make sure all towers and masts are securely grounded and cables connected to antennas have lightning arrestors. This will help prevent electrical and fire damage as well as human injury in case of a lightning strike, static build-up or short-circuit within equipment connected to the antenna.

Refer to the National Electrical Code for grounding details



NCG Company Ltd
www.natcommgroup.com
800/962-2611
Fax 714/630-4541