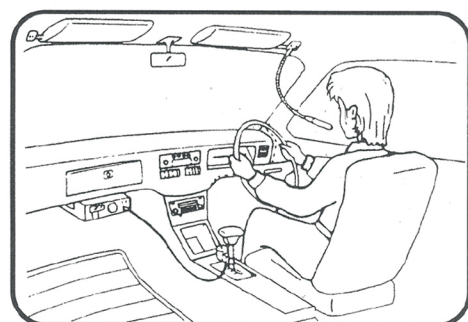


MAGNUM *Radio* AV-1KM

FLEXIBLE MICROPHONE FOR MOBILE RADIOS

FEATURES:

- Microphone mounts on the sun visor for tidy installation
- PTT mounts on the gear change lever
- DC power is taken from the microphone socket of your radio
- Additional up/down functions are available on PTT box
- Hands-free operation with latching PTT
- Adjustable microphone gain control
- Quick change leads for different radio models



SPECIFICATIOIS:

- Flexible goose neck 230 mm (L) x 8 (Dia)
- Mic cord..... 3m

CONTROL SECTION:

- Output cord..... 1.5m
- Dimensions..... 54 (Al) x 22 (A) x 69 (Dia)mm

CAUTION:

The microphone mounts under that bulkhead bolt of the sun visor. Please, make sure it is firmly attached and the cable is safely routed. Please, also make sure that the microphone is angled so it does not interfere with your forward vision.

<p>PTT MIC GND +9V SW 1 (Key Control) SW 2 (Key Control)</p>	<p>1. SW 2 (KEY CONTROL) 2. SW 1 (KEY CONTROL) 3. +9V 4. Mass 5. +MIC 6. PTT</p>	<p>WARNING: FOR RIGHT PERFORMANCE OF THE HANDS-FREE KIT, THE RADIO MUST BE COMPATIBLE WITH THE MICROPHONES MH-42B6JS AND CONFIGURED IN THE RADIO'S MENU DEPENDING ON THE MODEL.</p> <p>100% COMPATIBLE WITH: FT-100 / FT-7800 / FT-9800 / FT-8900 IT ONLY WORKS IN TX/RX (keys will not work) WITH: FT-1802 / FT-2800 AND SERIES WITH THE MH-48B6JS MICROPHONE.</p>
<p>87654321 12345678</p>	<p>1. DWN 2. NC: No connection 3. MIC 4. GND (MIC) 5. STBY (PTT) 6. GND 7. DC 8V, 200mA max. 8. UP</p>	<p>COMPATIBLE WITH: ALL RADIOS WITH RJ-45 CONNECTOR</p>
<p>87654321 12345678</p>	<p>1. Output +8 V DC 2. Up/down Frequency 3. Hi-L/90/98 control input 4. PTT 5. Microphone mass 6. Microphone input 7. Mass 8. No connection</p>	<p>COMPATIBLE WITH: ALL RADIOS WITH RJ-45 CONNECTOR</p>
	<p>1. Common / - Mic mass. 2. + MIC. 3. TX 4. RX</p>	<p>COMPATIBLE WITH: ALAN55, ATRON 507, AUDIOLINE 340/341/345, COBRA 18LTD, COBRA 18ULTRA, COBRA 19/DX-LTD/GTLT/LD/ULTRA, COBRA 21GTLT/LD/CLASSIC/XLR, COBRA 25GLT/LTD/CLASSIC GOLD/WX/CLASSIC/PLUS, COBRA 26, COBRA 29/LTD/CLASSIC/GOLD/WX/PLUS/XLR, SUPER STAR 3900</p>
	<p>1. +MIC. 2. RX 3. TX 4. UP/DOWN 5. Common / -MIC mass 6. NC</p>	<p>COMPATIBLE WITH: ALAN 48 PLUS MULTI, ALAN 48 EXCEL, ALAN 78 PLUS, ALBRECHT AE 4100/4180/5100/5150/5180/6000/8000, MAXON MX1000/2000, MAYCOM EM27, PRESIDENT TAYLOR CLASSIC, ETC.</p>

MAGNUM *Radio* MAGNUM *Radio*

ICOM KENWOOD YAESU CB 4 CB 6

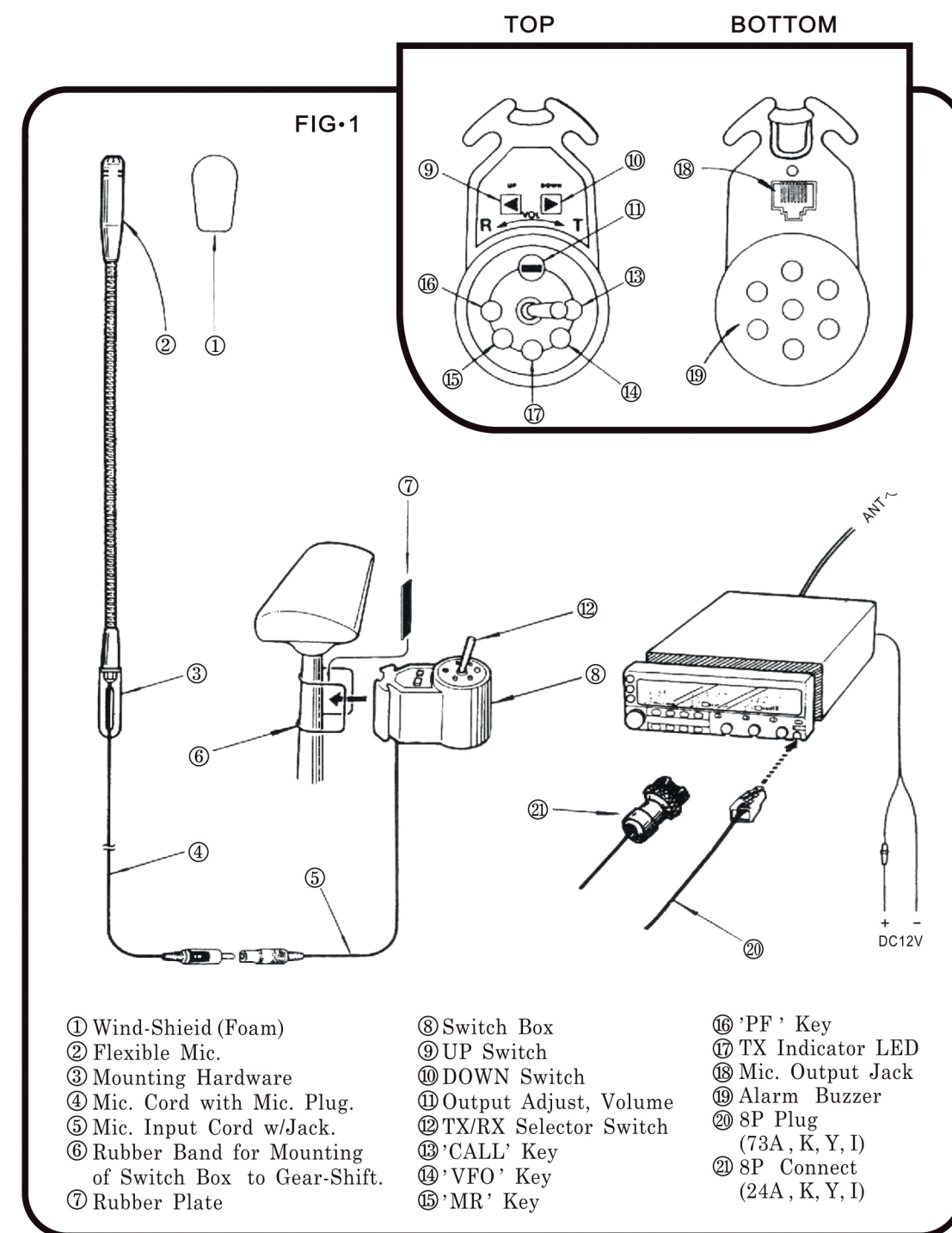


MAGNUM *Radio* AV-1KM

FLEXIBLE MOBILE MICROPHONE

Cable Type:

In most cases, the matching cable is supplied separately from this package. Your dealer should be able to supply a ready-made cable to match your transceiver.



How to Mount and Install the AV-1KM

Fasten the doose neck boom (3) under the car sun viso by using the car's existing screw or bolt. We recommend the position to the right of the driver.

Attach the wind-shield (1) to reduce noise.

The PTT box (8) is attached to the gear change with a rubber band (6). Observe the way the band is formed into two fastenings.

Connect the microphone cord (4) to jack (5). Then connect the appropriate mic. cord for your radio from the PTT box to your transcaiver. (To remove this cable from the PTT box you may find you have to tilt the plug forward slightly before pulling).

MAGNUM *Radio*

How to use

Set the TX/RX selector (12) to "T" for transmit and to "R" for receive. The LED indicator (17) should light up when in "T" mode. Speak about 10cm from the microphone and adjust mic. gain (11) to suit your voice and radio.

If your radio has the feature, the up/down buttons (9/10) should change frequency or channel. The actual operation depends on your radio design.

The CALL (13), VFO (14), MEMORY RETURN (15) and PRIORITY FUNCTION (16) have similar functions to those on your radio (subject to your radio's design).

Adjusting The Microphone Gain

The gain control (11) is quite critical. Please adjust carefully as it is directly mounted on the circuit board. Get another operator to listen to your audio or watch the ALC reading in the case of SSB. Too much gain can cause distortion !

RF Feedback.

If you run high power, you could have problems with RF feedback. Make sure that the microphone cable does not run near the antenna cable and make sure the VSWR is low. If any problem persists, then try placing a ferrite ring at the point where the mic. Cable enters the base of the PTT box. In bad cases, also try a ferrite ring near the point where the mic. Cable enters your transceiver. Before carrying out these suggestions, do check that there is no RF feedback with the normal transceiver microphone. If there is, then consult your dealer.

