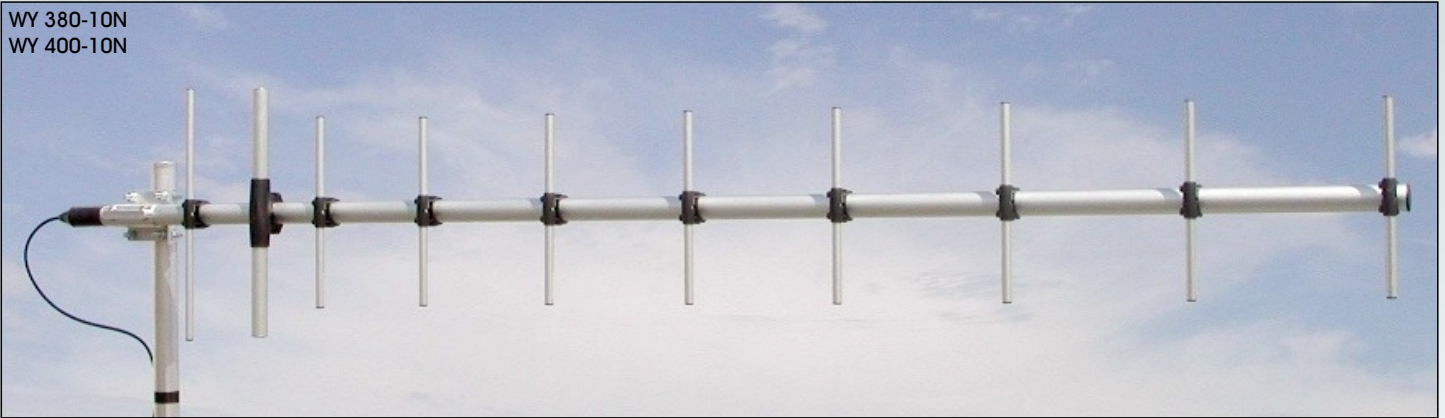
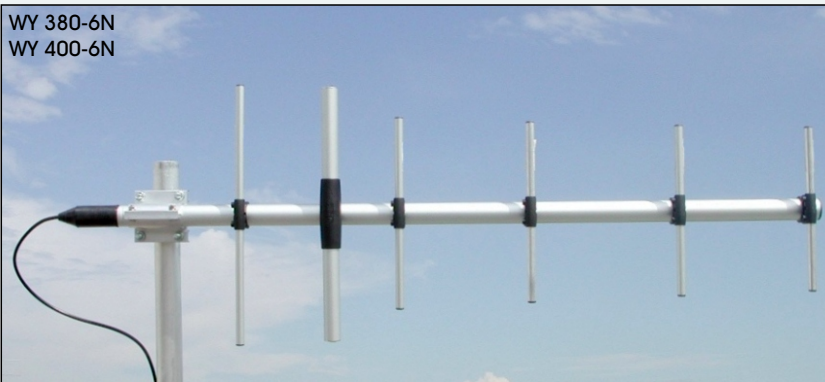


WY series
Wide-band Yagi 380-470 MHz

WY 380-10N
WY 400-10N



WY 380-6N
WY 400-6N

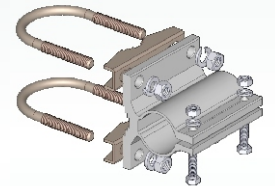
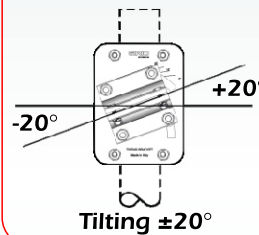


Optional Tilting bracket
P/N 2519803.00

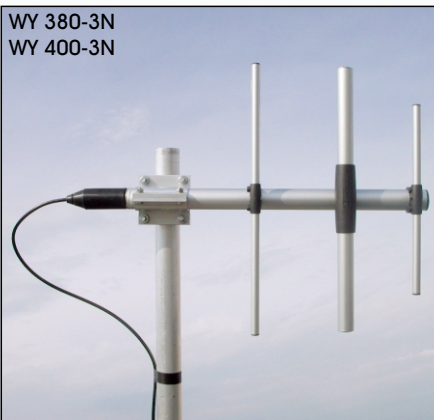
Materials & Hardware: zinc plated steel
Dimensions: 110 x 150 x 6 mm.
Weight: 800 gr

Standard Mounting bracket

Materials: extruded aluminum
Hardware: stainless & zinc plated steel
Dimensions : 80 x 76 x 65 mm
Weight: 460 gr

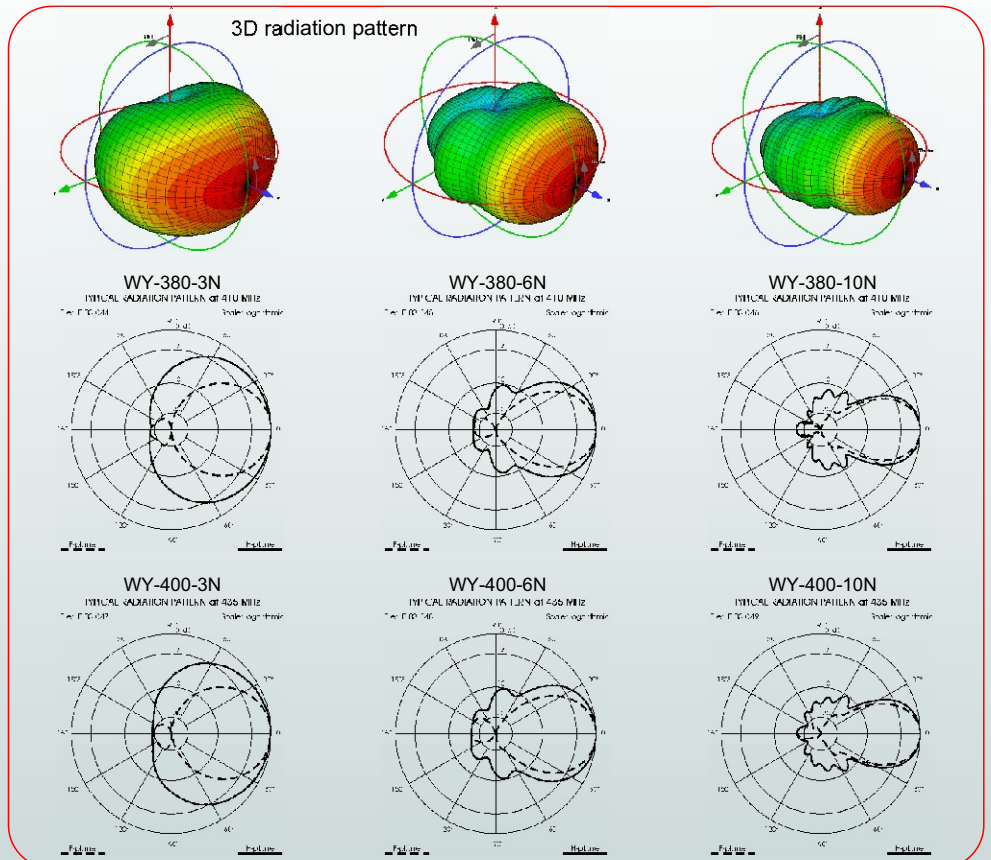


WY 380-3N
WY 400-3N



NEW MODELS

WIDEBAND YAGI
New feed system for
High simmetrical pattern
Completely computer
designed for the
best performances
Patent pending



WY series

Wide-band Yagi 380-470 MHz

Features:

- # Wide-band directional base station antenna
- # Exclusive feed system conceived for the highly symmetrical radiation pattern in both planes (E and H), patent pending applied
- # Completely computer designed to get the best performance of gain and front-to-back ratio in the band of interest
- # Made of anodized 6063-T5 aluminium, extruded aluminium bracket, rear mounting
- # N female connector protected by EPDM rubber cap for RG58 or RG213 cables
- # Stacked & bayed array for higher gain, Optional tilting bracket

Electrical Data	WY 380-3N	WY 400-3N	WY 380-6N	WY 400-6N	WY 380-10N	WY 400-10N
Type	3 elements Yagi		6 elements Yagi		10 elements Yagi	
Frequency Range @ SWR 1.5	380-440 MHz	400-470 MHz	380-440 MHz	400-470 MHz	380-440 MHz	400-470 MHz
Impedance	50					
Radiation (H-plane) beamwidth @ -3 dB	125°	125°	70°	70°	50°	50°
Radiation (E-plane) beamwidth @ -3 dB	65°	65°	55°	55°	45°	45°
Front to back ratio	17 dB	17 dB	17 dB	17 dB	18 dB	18 dB
Polarization	Linear Vertical or Horizontal					
Gain	4.85 dBd - 7 dBi	4.85 dBd - 7 dBi	8.85 dBd - 11 dBi	8.85 dBd - 11 dBi	11.85 dBd - 14 dBi	11.85 dBd - 14 dBi
Max Power (CW) @30° C	150 Watts					
Grounding Protection	All metal parts are DC-grounded, the inner conductor shows a DC short					
Connector	N-female with rubber protection cap					

Mechanical Data

Materials	Anodized 6063-T5 Aluminium, EPDM rubber, thermoplastic UV stabilized, Chromed Brass					
Wind Load @ 150 km/h	65 N	63 N	100 N	96 N	150 N	142 N
Wind Resistance	180 Km/h	180 Km/h	150 Km/h	150 Km/h	120 Km/h	120 Km/h
Wind Surface	0.048 m ²	0.047 m ²	0.078 m ²	0.075 m ²	0.121 m ²	0.115 m ²
Dimensions (approx.)	565 x 400 mm	525 x 375 mm	1180 x 400 mm	1130 x 375 mm	2125 x 400 mm	2000 x 375 mm
Turning radius (approx.)	460 mm	420 mm	1050 mm	1000 mm	1990 mm	1860 mm
Weight (approx.)	1130 gr	1100 gr	1540 gr	1490 gr	2120 gr	2040 gr
Operating temperature	-40° C to +60° C					
Mounting Mast	35 - 52 mm					
Boom / Dipole / Element Diameter	32 mm / 24 mm / 12 mm					
P/N	2113501/380	2113501/400	2113601/380	2113601/400	2113701/380	2113701/400

